



# CHORAL

Child Health Outcomes Research at Leeds

ISSUE 1 • MAY 2024

# NEWSLETTER

## Welcome

BY PROFESSOR ADAM GLASER, CHORAL DIRECTOR



*Welcome to the first Child Health Outcomes Research at Leeds (CHORAL) newsletter. We hope you enjoy this first edition of our new, quarterly newsletter to highlight the fantastic child health research and activities happening in our region.*

*The CHORAL programme is an exciting new platform to support and develop child health research across Leeds, Bradford and beyond. This £5 million programme, running between 2023-28, will build upon the current £600 million capital investment in Leeds Children's Hospital to create a world-leading platform of academic excellence in children's healthcare. It aims to improve children's lives through the delivery of a sustainable programme of transformative research focussed on child health.*

*February saw the launch of CHORAL at Cloth Hall Court in Leeds. We welcomed over 200 attendees from across the region, including the Leeds Children's Mayor, West Yorkshire Combined Authority, West Yorkshire Integrated Care Board, along with national and international stakeholders such as the Royal College of Paediatrics and Child Health and the Centre for Young Lives. We heard highlights from national and international stakeholders and early career researchers alike and gathered to review the CHORAL theme strategies.*

*If you would like to meet up with other people interested in child health research in Leeds, please come along to our Summer "Cheese and Wine" meeting on 26 June (link to registration on page 4). We look forward to seeing you there.*

*Have a great summer!*

**Check out our new video, filmed at our Launch Event in February 2024, with key stakeholders highlighting the importance of child health research in our region.**

**If you have any items for future newsletters, please email [choral@leeds.ac.uk](mailto:choral@leeds.ac.uk)**

## This issue:

Research News	Page 2
Events	Page 4
Opportunities	Page 5
Across the City	Page 6
Meet the Researcher	Page 7
Prizes and awards	Page 8

## Launch of BRUSH

### SUPERVISED TOOTHBRUSHING SCHEME



Researchers from the University of Leeds, University of Sheffield and Bradford Improvement Academy have developed free online resources for NHS organisations, local government, schools, nurseries and parents, as part of the **BRUSH** project to better support existing and new toothbrushing programmes.

The new Toolkit provides supervised toothbrushing programmes and aims to address health inequalities caused by tooth decay. Since its launch in January people from over 50 countries have accessed the resource.

To find out more visit: <https://arc-swp.nihr.ac.uk/research/projects/brush>.

*CHORAL's world-leading scientists are already generating evidence to make improvements in child health, through work to support world class research studies and clinical trials, nurturing a vibrant community of researchers and healthcare professionals.*

ESTHER WAKEMAN, CEO,  
LEEDS HOSPITALS  
CHARITY

## A country that works for all children and young people

AN EVIDENCE-BASED PLAN FOR SUPPORTING PHYSICAL ACTIVITY AND HEALTHY NUTRITION WITH AND THROUGH EDUCATION SETTINGS

This new report published Friday May 24th, by Child of the North and Centre for Young Lives, sets out evidence-based recommendations to give schools the powers to develop their own holistic approaches to improving healthy diets and physical activity.

To view the full series of reports and sign up for campaign updates, [click here](#).

A country that works for all children and young people

An evidence-based plan for supporting physical activity and healthy nutrition with and through education settings



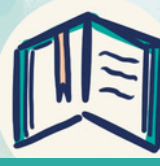
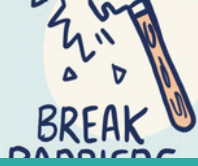
## Westminster Insights School Attendance National Conference

Dr Simon Pini presented findings from the INSCHOOL project at the Westminster Insights School Attendance National Conference.

The project has delivered a series of three papers:

- School lives of adolescent school children living with chronic physical health conditions - to read [click here](#)
- The INSCHOOL project showcasing participatory qualitative methods derived from PPIE work with young people with long term health conditions - to read [click here](#)
- The INSCHOOL project: Young people with long-term physical health conditions: An in-depth study of their needs at school- to read [click here](#)





# Presentations from CHORAL Fellows

Children’s Cancer and Leukaemia Group (CCLG) 2024 Annual Conference.

The CCLG conference hosted two days of essential updates in children and young people’s cancer in the UK. Two posters were presented at the event by CHORAL researchers - Rebecca Mottram and Kirsten Cromie.

## Kirsten Cromie - Ethnic Disparities in Paediatric Lymphoma Survival – A Multiregional Study

A recent study found persisting ethnic disparities in childhood lymphoma survival rates in Yorkshire over a twenty-year period. In the absence of national estimates, this multi-regional study aimed to utilise high quality cancer registration data to describe and compare ethnic variation in tumour-case mix and survival rates in more detail for individuals diagnosed with paediatric lymphoma in Yorkshire and the West Midlands.

To view Kirsten’s poster [click here](#).

## Rebecca Mottram - Meeting the needs of young cancer patients and their caregivers after fertility tissue preservation: A mixed methods study to inform a reproductive clinical care support tool

Aim: To create an evidence-based, reproductive care support tool for healthcare professionals (HCP) who take care of young adults who store tissue after childhood cancer. This tool will help HCP provide personalised and consistent care that addresses their specific needs. This will be important as these young adults grow up and make use of their stored tissue.

To view Rebecca’s poster [click here](#).



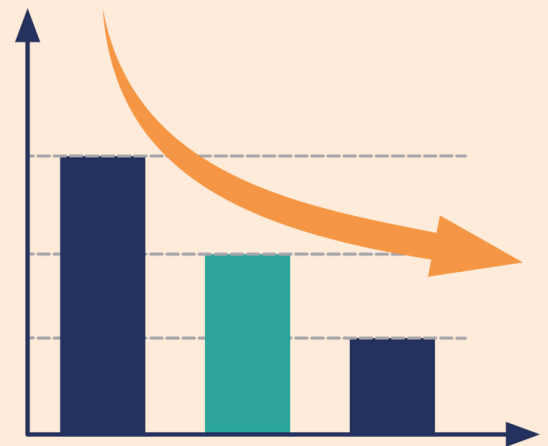
## Interactive Postcards

As part of her PhD project Rebecca Mottram has created a series of interactive postcards, to help share the experiences of young people who have stored ovarian or testicular tissue for future fertility. Read more patient stories here

<https://view.genial.ly/663115e54ea7fd00148c4d07/interactive-image-test-image>

*'It just felt like everything was kind of taken away from me and you know, my future. Each thing that I found out was another thing being taken away, but [tissue preservation] was something that was being given back to me.'*

- Zara, age 24



## CHORAL Early Career Research Consultation Group

Drs. Simon Pini and Carole Burnett had the first meeting of the CHORAL Early Career Research (ECR) Consultation Group. This is a group of ECRs who they will consult with on an ongoing basis about ways to improve the child health research community in Leeds. For more information, please contact [CHORAL@leeds.ac.uk](mailto:CHORAL@leeds.ac.uk).

## RCPCH Conference, Birmingham

Members of the CHORAL team attended the event in Birmingham, in March. As well as updating on CHORAL progress, they hosted a workshop, which saw experts across education, research, health and care, come together to discuss how child health professionals can improve outcomes for children. In response, RCPCH committed to advocate for children's rights within local and central government.

The workshop showcased exemplars of outstanding practice and highlighted successes in shaping government policy. The workshop generated recommendations for the next government and a route to ensuring children are at the heart of policy making.

Education plays a major role in influencing health and socio-economic status, but learning can often influence a young person's academic, psychological, and social experience at school. A whole system approach is needed to co-ordinate health and education (and other public services) support for children

## UPCOMING EVENT CHORAL Summer Gathering

26th June, 15:30-17:30

NEXUS ATRIUM, UNIVERSITY OF LEEDS

To find out more, and sign up  
[click here.](#)





# Funding Opportunities

**Funder:** National Institute for Health and Care Research (NIHR), PGfAR Early action to prevent poor health outcomes

**Award amount Max:** £5,000,000.00

**Closing Date:** 29 Nov 24

**Summary:** The focus of this call is prevention, early diagnosis and appropriate intervention for people at increased risk of poor health (in particular obesity, cardiovascular disease, type 2 diabetes, mental health and cancer) to prevent excess deaths, improve population health (including the health of the working age population), reduce disparities and decrease reliance on health and social care.

**Find out more, [click here.](#)**

**Work at the University of Leeds? Contact** [R-lddevelopment@leeds.ac.uk](mailto:R-lddevelopment@leeds.ac.uk)

**Funder:** Leeds Hospitals Charity

**Stream:** Various streams available including, Patient Experience Grant, Innovation Grant, Education Grant, Research Seed Funding, Research Pump Prime Funding

**Closing Date:** Available throughout 2024/25

**To find out more, [click here.](#)**

**Funder:** Paediatric Critical Care Society

**Award amount Max:** £2,500

**Opening Date:** February and July each year

**Summary:** Research projects in either basic science or clinical research in a field relevant to paediatric intensive care may be supported. Research intended to allow acquisition of data to support a larger-scale research grant application is encouraged.

**Find out more, [click here.](#)**

**Funder:** Research England, Institutional strategic developmental projects in higher education

**Award amount Max:** n/a

**Opening Date:** Open - no closing date

**Summary:** Apply for funding to develop institutional-level innovations in research and knowledge exchange. Your project should involve:

- addressing government and UKRI priorities
- working with partners.

**Find out more, [click here.](#)**

**Funder:** EPSRC, Health Technologies Connectivity Awards

**Award amount Max:** £500,000

**Closing Date:** 3 September 2024 4:00pm UK time

**Summary:** Apply for funding to spend time in a different research or user environment to build new connections within health technologies. Novel engineering and physical sciences (EPS) research contributing to the delivery of the [health technologies strategy](#) must comprise a proportion of the placement.

**Find out more, [click here.](#)**

**Funder:** Worldwide Universities Network (WUN) Research Development Fund

**Award amount Max:** n/a

**Closing Date:** n/a

**Summary:** The Research Development Fund (RDF) is an annual competitive fund aimed at bringing together researchers to undertake innovative, high quality, sustainable research that addresses WUN focus areas.

**Find out more, [click here.](#)**

**Funder:** Kidscan

**Stream:** [Pump Priming Grant](#), to support individuals working in any area of children's cancer research

**Award amount Max:** £5,000 over 12 months

**Stream:** [PhD Studentship](#) to support individuals working in any area of children's cancer research.

**Award amount Max:** £65,000 over 3 years

## From across the city...



### Best Start Plan Refresh

The Best Start Plan refresh event was held on 11th March, with over 70 people coming together to look at how we can ensure all children in Leeds have the best start in life. Presentations about the importance of early relationships and communication and language set the scene before partners spent time discussing priorities using a 'Whose Shoes' approach to facilitate conversations. The outputs from these conversations will be used alongside service user insight to support the process of refreshing the strategy and developing the new implementation plan.



### Fairer, Healthier – Leeds as a Marmot City: 0–5 Years Workshop

On Tuesday 16th January over 60 colleagues from across Leeds joined a workshop focused on 0 – 5 year olds in the city. Dr Tammy Boyce from the Institute of Health Equity at University College London provided feedback from the work the Marmot team have been doing over the past few months – analysing data and meeting with partners working with children across Leeds. Tammy shared her observations including what is working well in Leeds, areas to consider and highlights around inequalities from analysing data. Tammy asked delegates to consider how best to Join Up, Scale Up and Be Bold. Attendees spent time discussing these issues. A report is being developed taking into account Tammy's analysis, summary of workshop discussions and recommendations for action. A second workshop will be held to take this work forward.

## Meet the Researcher



**Name:** Dr Elizabeth Roundhill

**Job Title:** Early Career Researcher

**Organisation:** University of Leeds

**Tell us about your research:**

My research is focussed on a bone and soft tissue cancer affecting children and young people, Ewing sarcoma. Outcomes have not improved in over 30 years and many patients have long-term treatment induced health problems. Therefore, I am using bespoke models to develop more effective, kinder treatments.

**What's your proudest achievement?**

I'm most proud of our work identifying a protein that can pick out which Ewing sarcoma patients are most likely to relapse. In the future, we hope identifying these patients earlier will allow them to be prioritised for alternative treatments which could lead to improved outcomes and less health problems during and after treatment.

**If you could choose anyone to have dinner with, who would it be and why?**

Vivienne Westwood- I've always loved her clothes and accessories. It would have been great to hear about the creative design process and being such a driving force in 1970s punk Britain.

**What are you reading at the moment?**

I've just started Lessons in Chemistry by Bonnie Garmus.

**What is your favourite place in Yorkshire?**

I like to take my whippet to Otley Chevin and see him free run at full speed.

**What is your favourite inspirational quote?**

*"Science knows no country, because knowledge belongs to humanity, and is the torch which illuminates the world."* – Louis Pasteur.

This next quote is also particularly relevant to me because my desk is not particularly tidy...

*"If a cluttered desk is a sign of a cluttered mind, of what, then, is an empty desk a sign?"* – Albert Einstein.

**If you could give new researchers one piece of advice, what would it be?**

Collaboration between researchers in the laboratory and health workers treating patients is key to impactful cancer research. So... I would suggest to all new researchers that they link up with our clinical colleagues as soon as possible at the beginning of any project to help to move laboratory findings more rapidly into the clinic.

## Prizes and awards

### *Student of the Year*



Congratulations to Megan Roker (Research and Implementation Fellow) who won Leeds University Union and Faculty of Biological Sciences, Student of the Year award for her contributions to the CHORAL Launch.



Congratulations to Dr Nicola Huges, who has successfully secured an NIHR Academic Clinical Lecturer post in Medical Oncology.

### Applications now open for the **BSPED Paediatric Endocrine and Diabetes Nurse and Allied Health Professionals Award**

Awards to recognise individuals who have demonstrated innovative and successful initiatives in the field of Paediatric Endocrinology  
2 awards of £1,500 available  
apply by 5pm Monday 8 July 2024.

## Simon Newell and Leeds Hospitals Charity Undergraduate Award 2024

Brought to you by CHORAL

We are delighted to announce the first annual Child Health Outcomes Research at Leeds (CHORAL) prizes for undergraduate work in child health

Closing date: 14th June 2024

For more information and to apply, please contact [choral@leeds.ac.uk](mailto:choral@leeds.ac.uk)

**For more information about CHORAL, visit:**

[www.choralresearch.org.uk](http://www.choralresearch.org.uk)

**Contact us:**

@CHORAL\_Research

CHORAL@leeds.ac.uk